

Annotating Images with OADM, Shared Canvas and ORE

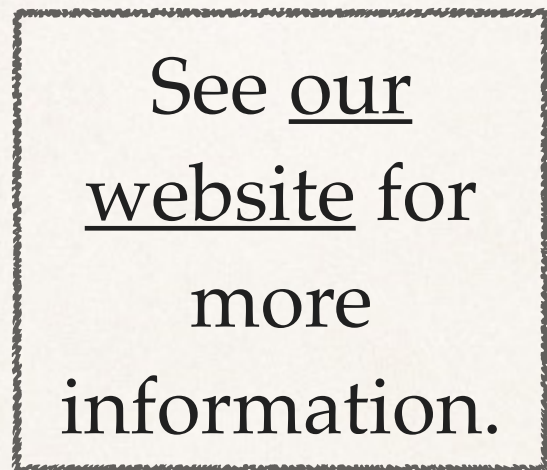
Dr. Heinz-Günter Kuper <kuper@bitgilde.de>

DARIAH "Intelligent Annotations" Workshop, Schloss Wahn, 2015-05-28

Light Table

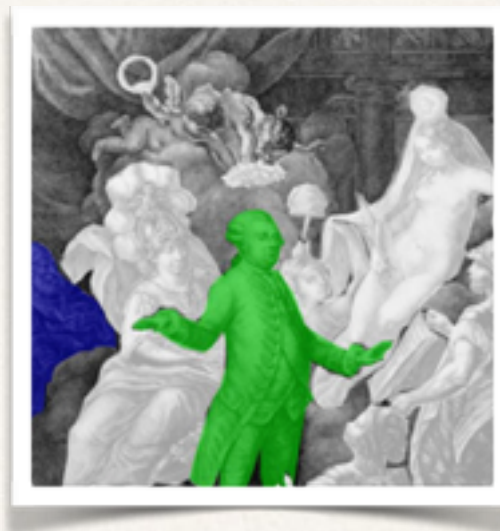
- 
- ❖ arrange images, creating spatial relationships
 - ❖ provide an overview
 - ❖ support collaboration

hypertext



Text as Anchor

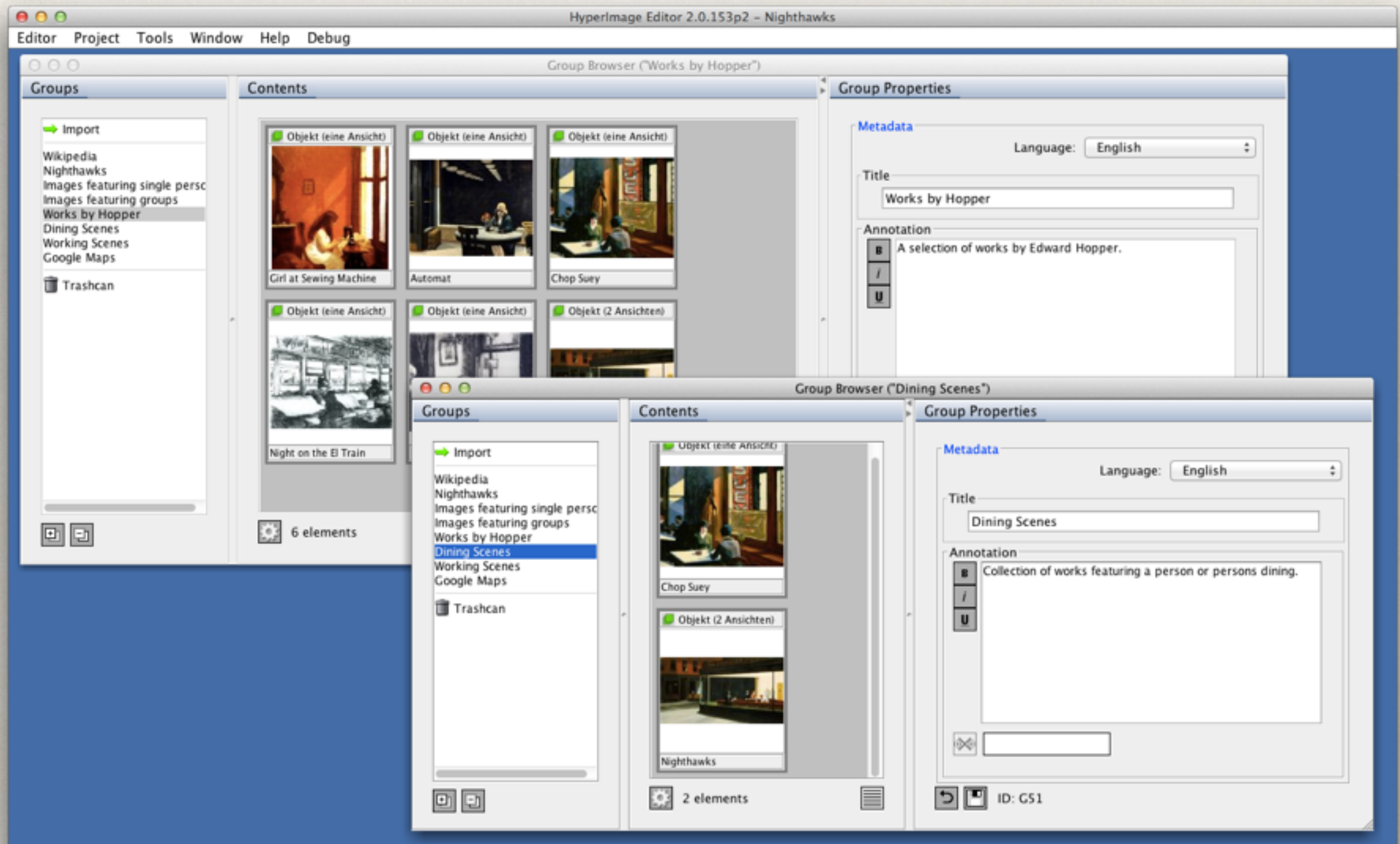
hyperimage



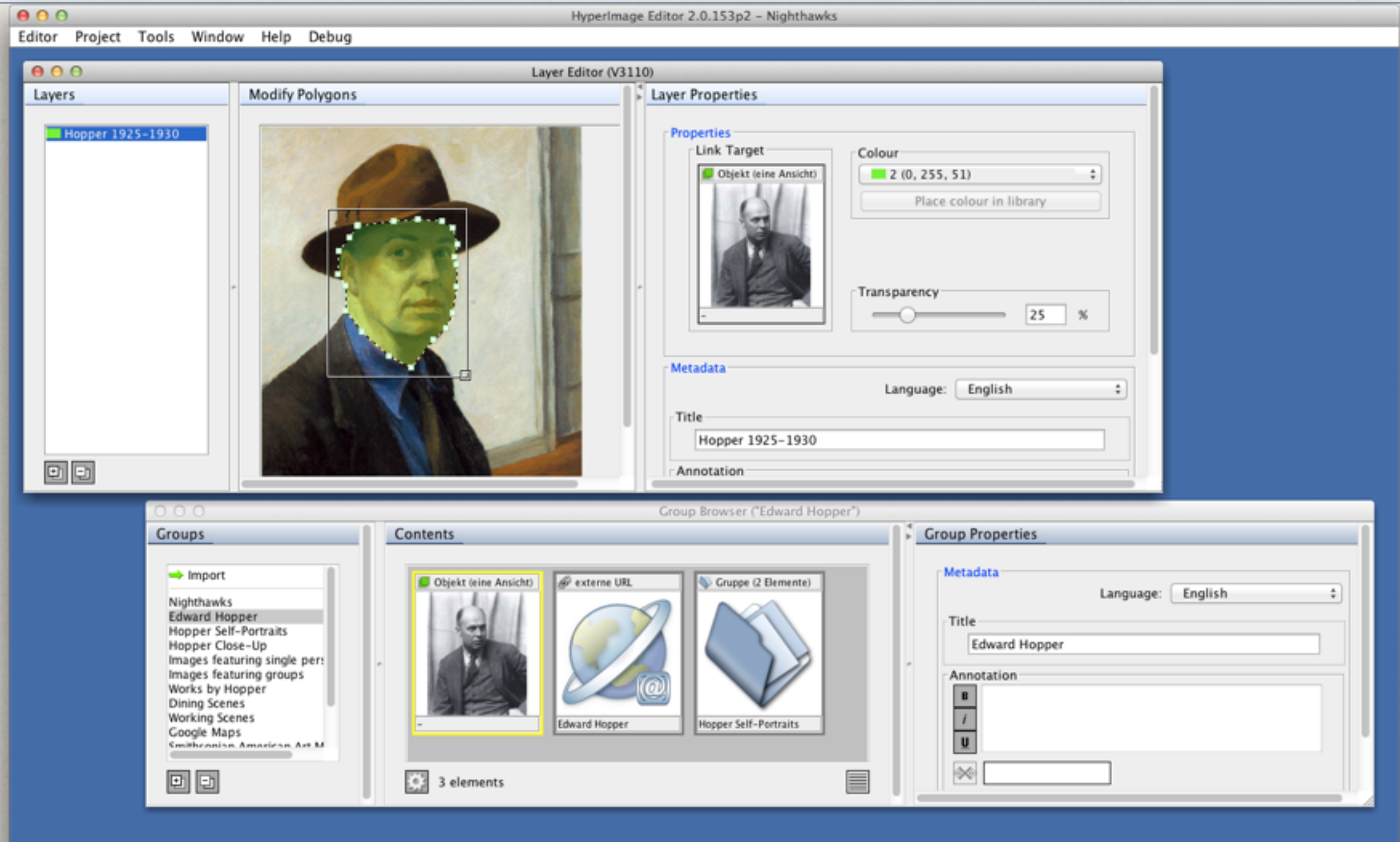
Region as Anchor

vs.

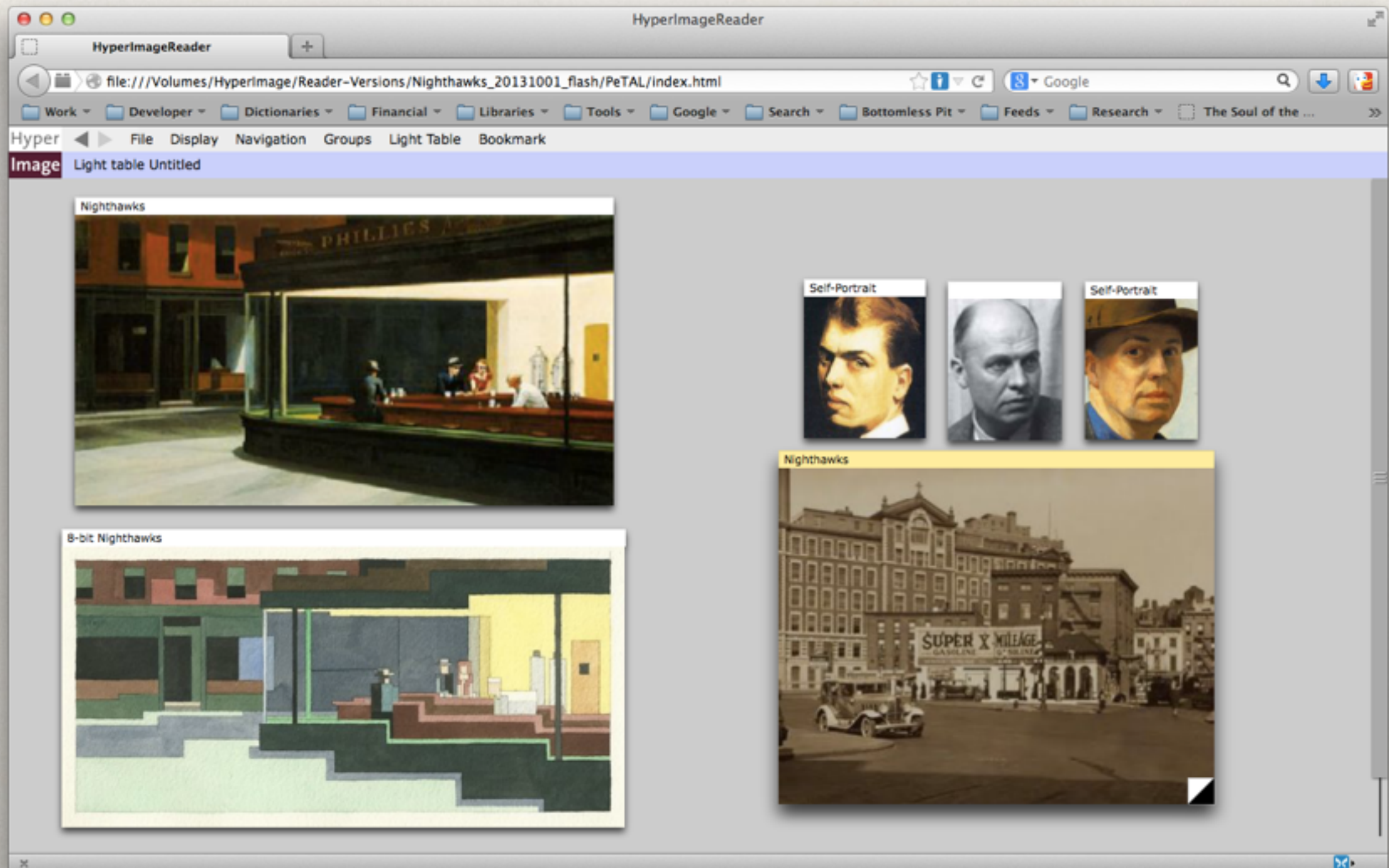
HyperImage Editor

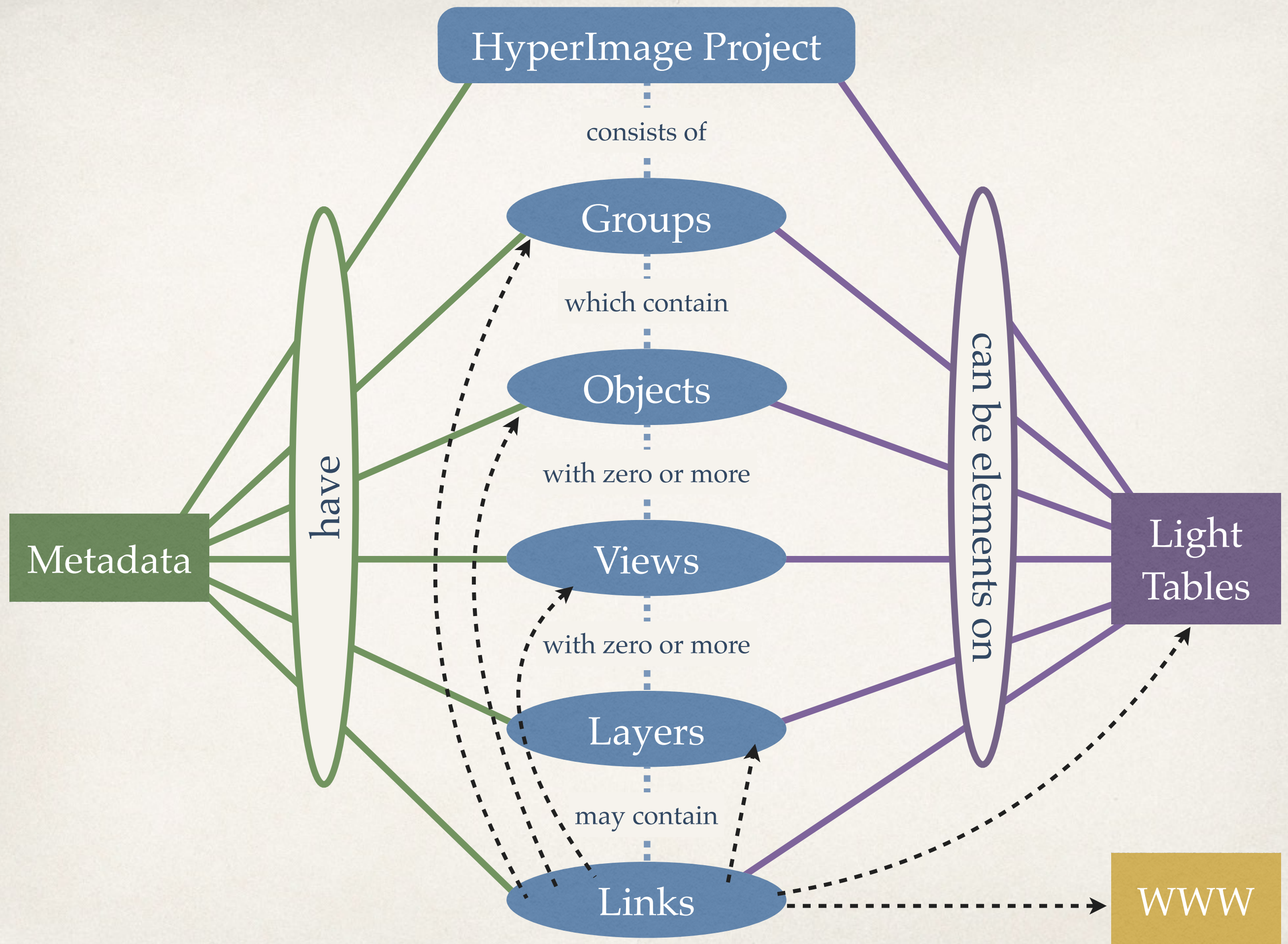


HyperImage Editor



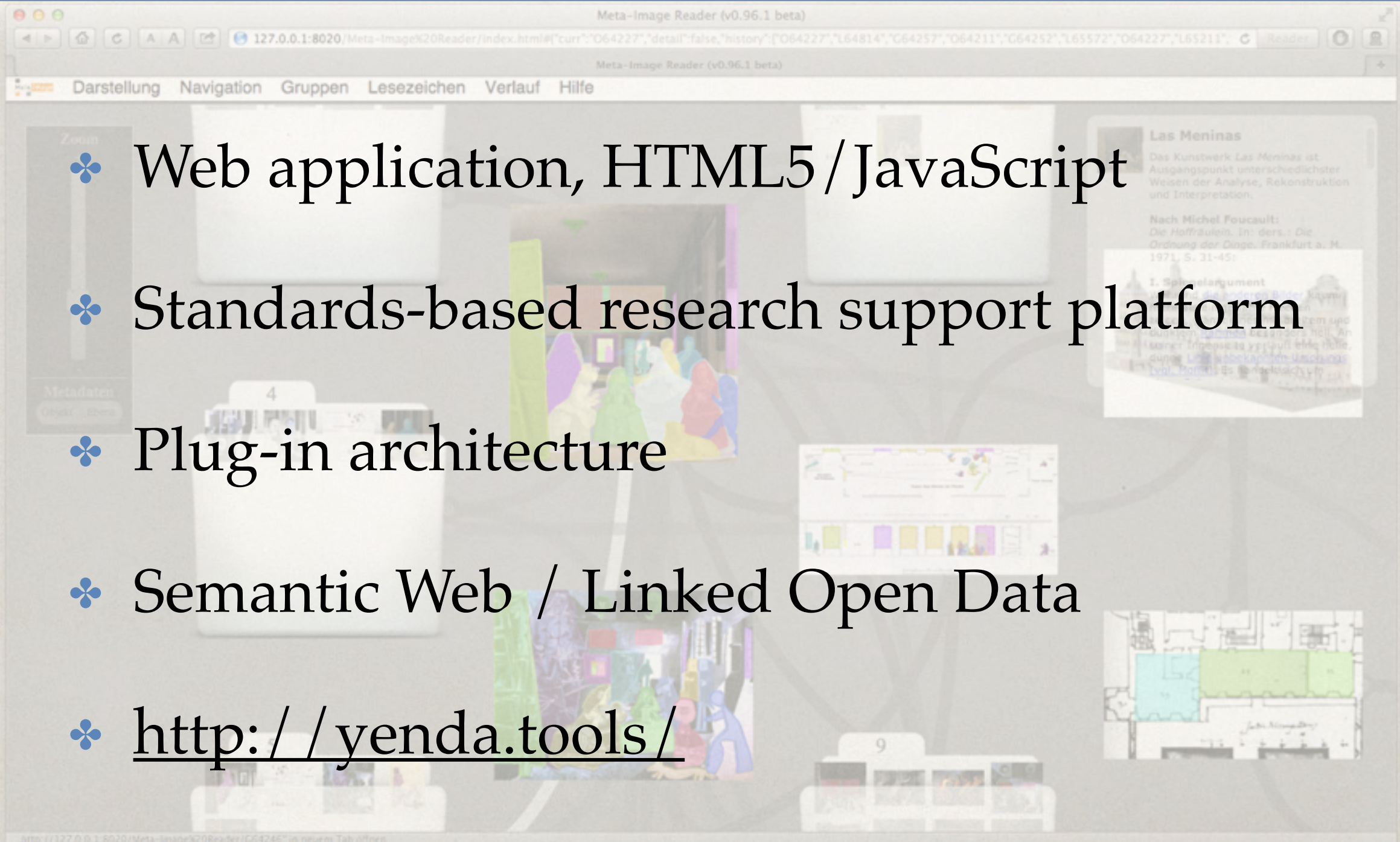
HyperImage Light Table





Yenda

- ❖ Web application, HTML5 / JavaScript
- ❖ Standards-based research support platform
- ❖ Plug-in architecture
- ❖ Semantic Web / Linked Open Data
- ❖ <http://yenda.tools/>

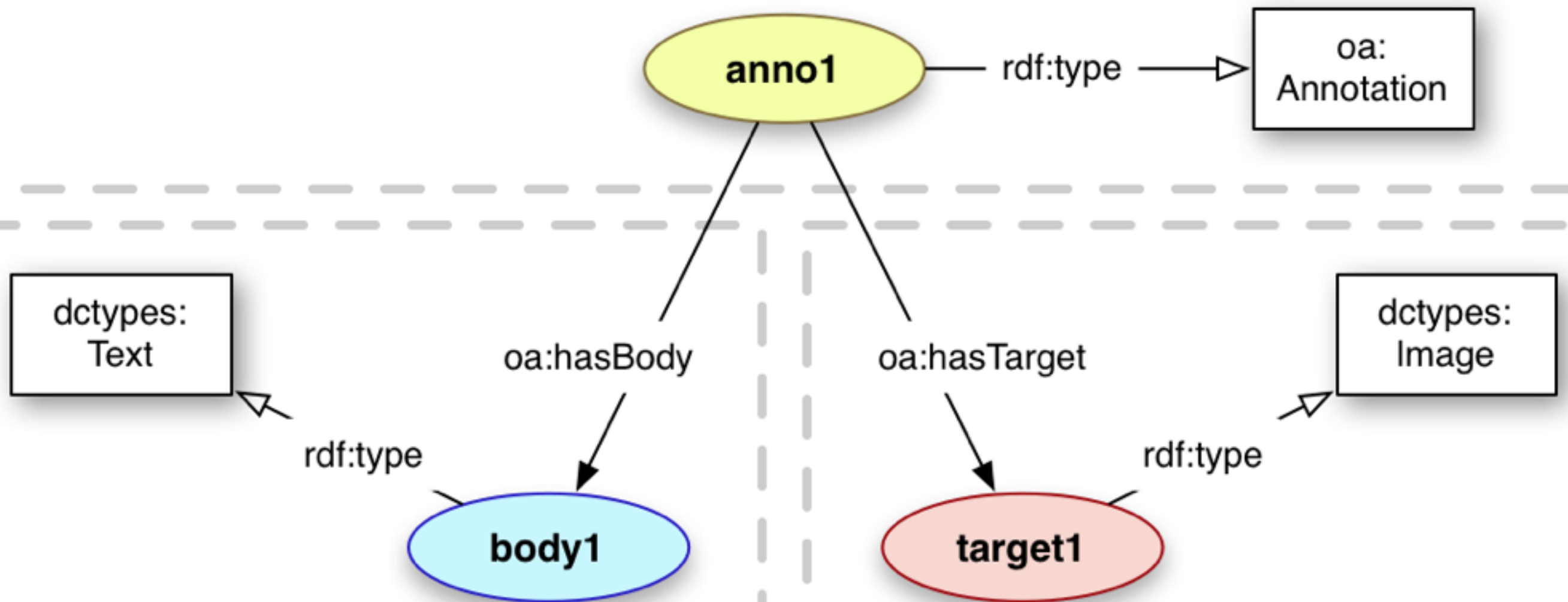


Open Annotation Data Model

“The primary aim of the Open Annotation Data Model is to provide a **standard** description mechanism for sharing Annotations between systems. This **interoperability** may be either for sharing with others, or the **migration** of private Annotations between devices. The shared Annotations must be able to be integrated into existing collections and reused without loss of significant information. [...]”

– <http://www.openannotation.org/spec/core/>

Community Draft, 08 February 2013



– <http://www.openannotation.org/spec/core/>

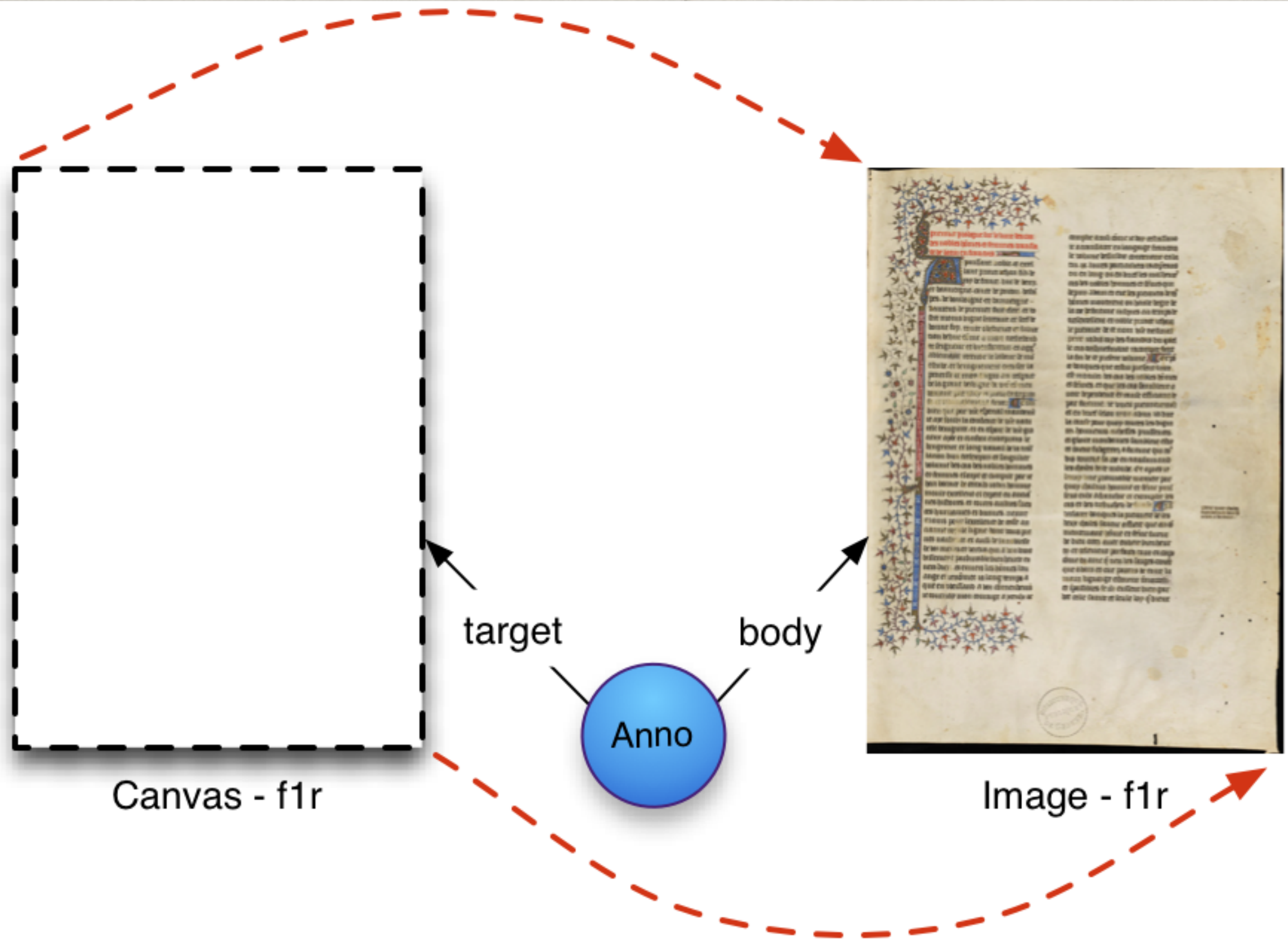
Community Draft, 08 February 2013

Shared Canvas

“The goal of the Shared Canvas data model is to provide a **standardized** description of the digital resources that are **surrogates** for culturally important, primarily textual physical objects in order to enable **interoperability** between repositories, tools, services and presentation systems. The resource being modeled is, therefore, a single physical item (a book, a manuscript, a painting) rather than the intellectual work embodied within it (the text or other content).”

– <http://iiif.io/model/shared-canvas/1.0/index.html>

1.0, 14 February 2013



– <http://iiif.io/model/shared-canvas/1.0/index.html>

1.0, 14 February 2013

Open Archives Initiative Object Reuse and Exchange

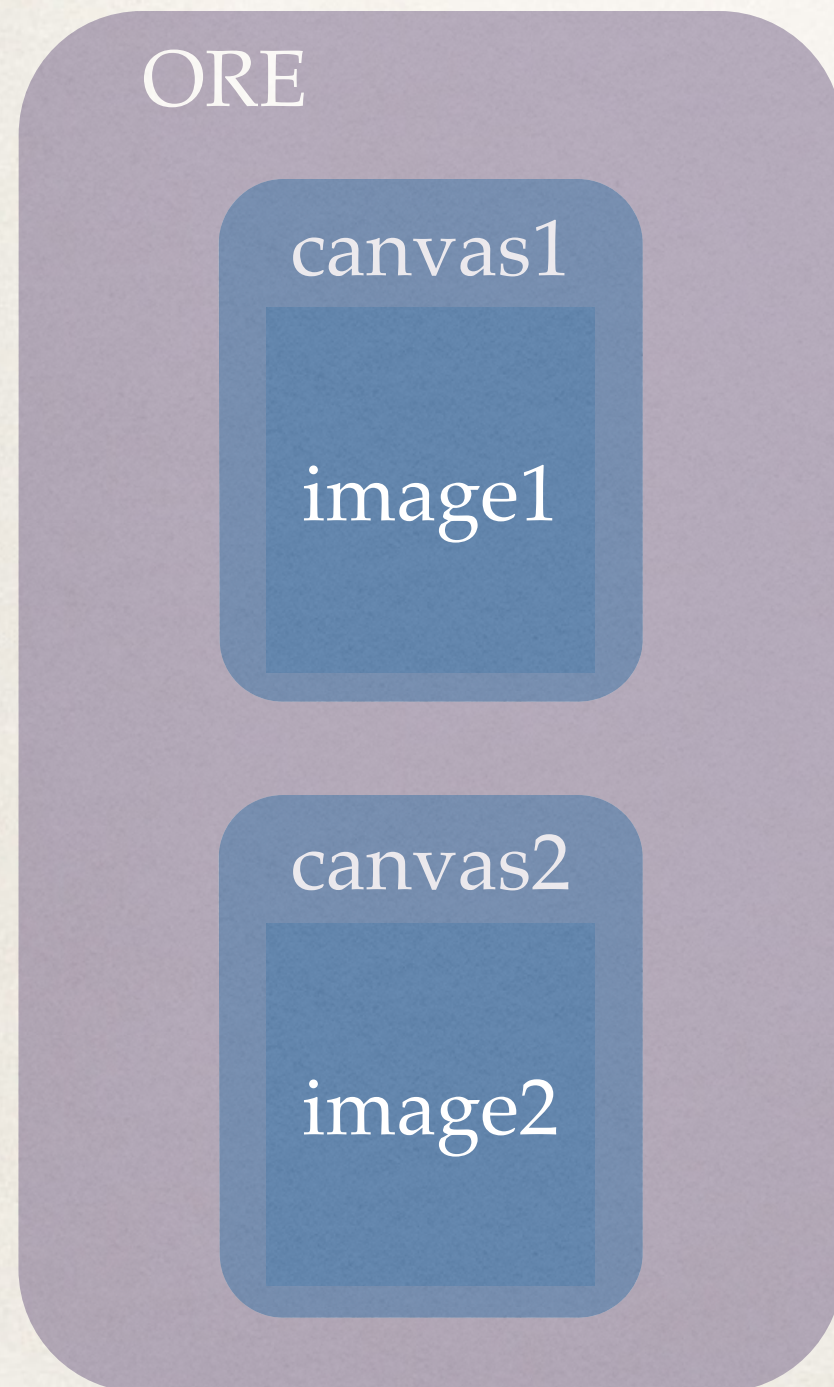
In order to be able to unambiguously refer to an **aggregation** of Web resources, a new Resource is introduced that stands for a set or collection of other Resources. This new Resource, named an *Aggregation*, has a **URI** just like any other Resource on the Web does.

– <http://www.openarchives.org/ore/1.0/primer>

HyperImage Markup Language

- ❖ Wrapper / container format.
- ❖ Extend the standards as required to compensate for deficits.
- ❖ “[...] digital information lasts forever – or five years, whichever comes first.” [Jeff Rothenberg]

Yenda Light Table



- ❖ ORE allows us to aggregate canvases to support our light table metaphor.
- ❖ ORE aggregation is referenceable by a single URI.

hyperimage.ws

bitgilde.de